

MODEL 89
 LMS30 MAX-MAX-N-MAS
 ギヤケース
 GEAR CASE

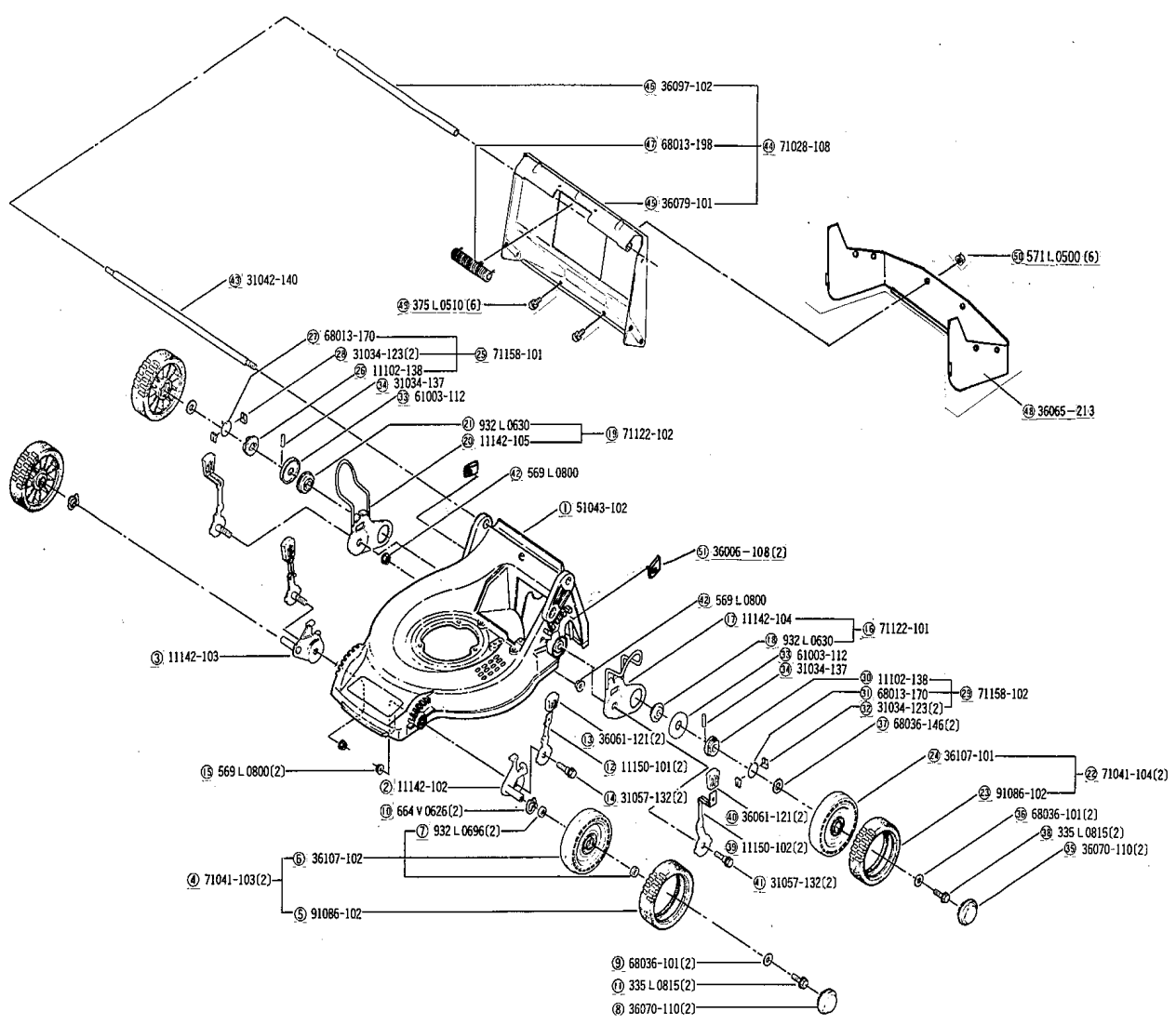
PARTS LIST

MODEL : LM530 MAX,MAX-N,MAS (GEAR CASE)

'89 Spec.

Dec. 4, 1989 E. Kanoh 1 / 2

REF. NO.	PARTS NO.	PARTS NAME	Q'TY	PRICE(¥)	Q'TY /100 SETS /YEAR	REMARKS
1	71008-203	GEAR CASE ASS'Y	1	28,750	3	
2	51001-195	GEAR CASE	(1)	4,140	3	
3	51001-196	GEAR CASE	(1)	4,140	3	
4	61002-161	OIL SEAL SD 10 20 5	(1)	80	5	
5	61002-162	OIL SEAL SD 8 14 4	(2)	60	10	
6	61002-163	OIL SEAL SD 15 24 5	(2)	80	10	
7	64024-104	SHIFTER SHAFT	(1)	340	3	
8	214B11000	O-RING S110	(1)	150	5	
9	11006-101	STAY C.P.	(1)	340	3	
10	61024-121	SPACER	(1)	50	5	
11	78001-128	BEVEL GEAR	(1)	2,420	3	
12	61024-117	SPACER	(1)	60	5	
13	78003-111	PINION	(1)	1,180	3	
14	91097-101	UNIVERSAL JOINT	(1)	1,900	3	
15	812V1800	C-SNAP RING FOR SHAFT ϕ 18	((1))	30	1	
16	717B0418	PARALLEL PIN ϕ 4x18	((1))	50	3	
17	64014-181	SHAFT	(1)	1,500	3	
18	68013-167	SPRING	(1)	85	3	
19	31034-122	PIN	(1)	120	3	
20	64014-157	SHAFT	(1)	340	3	
21	11097-106	SHIFTER FORK	(1)	970	3	
22	11129-104	CLUTCH	(1)	1,040	3	
23	61024-118	SPACER	(2)	60	6	
24	78004-139	GEAR	(1)	870	3	
25	78004-140	GEAR	(1)	1,150	3	
26	64014-163	SHAFT	(1)	1,730	3	
27	78012-107	GEAR C.P.	(1)	2,530	3	
28	31034-150	PIN	(1)	90	3	
29	11104-119	ARM	(1)	250	3	
30	11104-137	ARM	(1)	340	3	



MODEL '89
 零件圖
 WHEEL
 LM530 MAX MAS

PARTS LIST

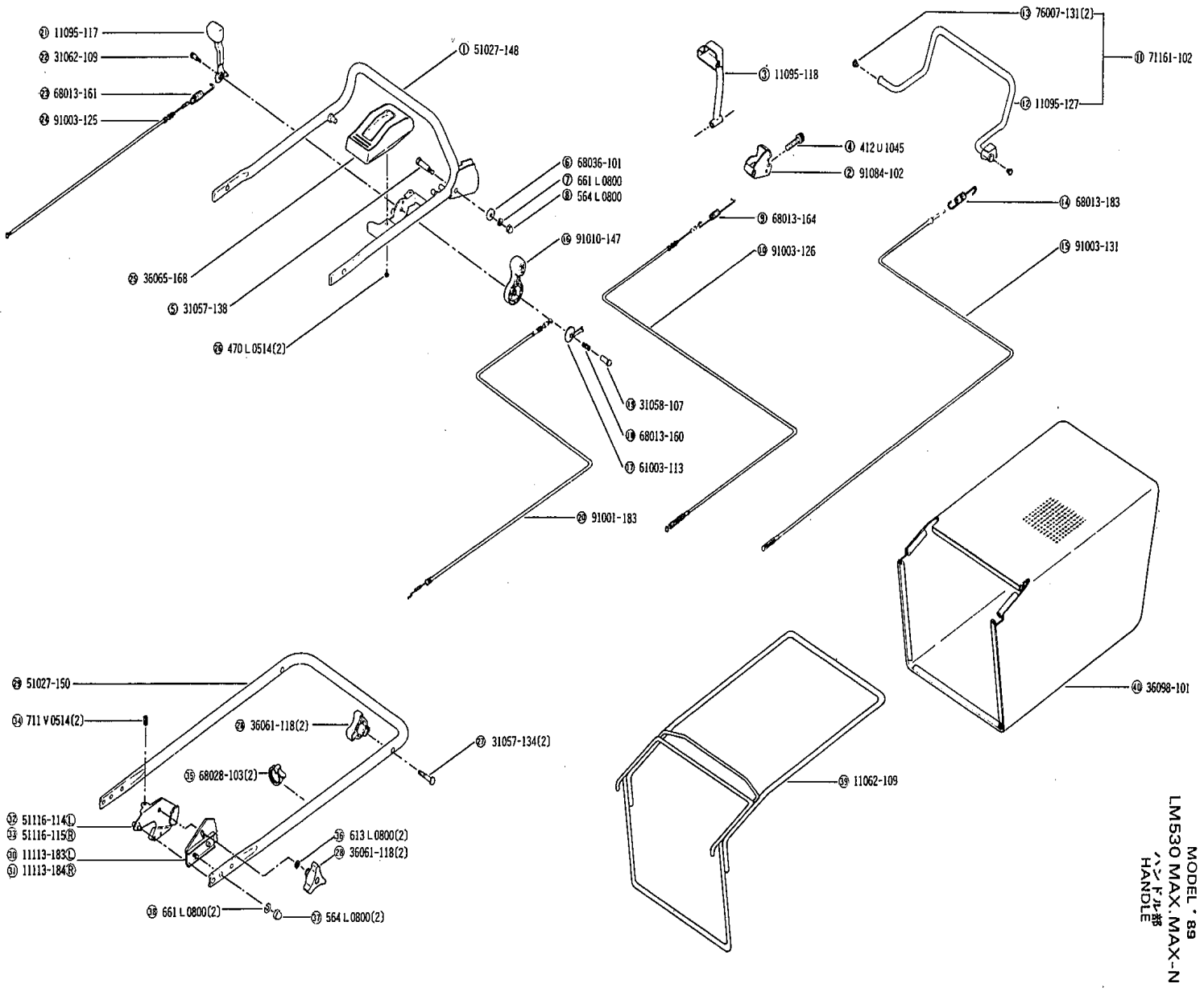
MODEL : LM530 MAX,MAS (WHEEL)

'89 Spec.

Dec. 4, 1989 E. Kanoh

1 / 2

REF. NO.	PARTS NO.	PARTS NAME	Q'TY	PRICE(¥)	Q'TY /100 SETS /YEAR	REMARKS
1	51043-102	HOUSING	1	32,490	3	
2	11142-102	ADJUSTER	1	890	3	(L)
3	11142-103	ADJUSTER	1	890	3	(R)
4	71041-103	WHEEL ASS'Y	2	2,300	6	
5	91086-102	TIRE	(1)	980	15	
6	36107-102	WHEEL	(1)	1,330	3	
7	932L0696	BEARING	((2))	170	10	
8	36070-110	CAP	2	140	6	
9	68036-101	WASHER	2	40	6	
10	664V0626	WAVE SPRING WASHER	M6x26	20	6	
11	335L0815	FLANGE BOLT	M8x15	70	6	
12	11150-101	ADJUST LEVER	2	560	6	
13	36061-121	KNOB	2	170	6	
14	31057-132	HEXAGON BOLT	2	270	6	
15	569L0800	FLANGE NYLON NUT	M8	40	6	
16	71122-101	ADJUSTER ASS'Y	1	1,380	3	(L)
17	11142-104	ADJUSTER	(1)	1,070	3	
18	932L0630	BEARING	(1)	270	5	
19	71122-102	ADJUSTER ASS'Y	1	1,380	3	(R)
20	11142-105	ADJUSTER	(1)	1,070	3	
21	932L0630	BEARING	(1)	270	5	
22	71041-104	WHEEL ASS'Y	2	2,190	6	
23	91086-102	TIRE	(1)	980	15	
24	36107-101	WHEEL	(1)	1,210	3	
25	71158-101	RATCHET ASS'Y	1	750	3	(R)
26	11102-138	HOLDER	(1)	430	3	
27	68013-170	SPRING	(1)	190	5	
28	31034-123	PIN	(2)	120	6	
29	71158-102	RATCHET ASS'Y	1	750	3	(L)
30	11102-138	HOLDER	(1)	430	3	



MODEL '89
 LM530 MAX MAX-N
 HANDLE

PARTS LIST

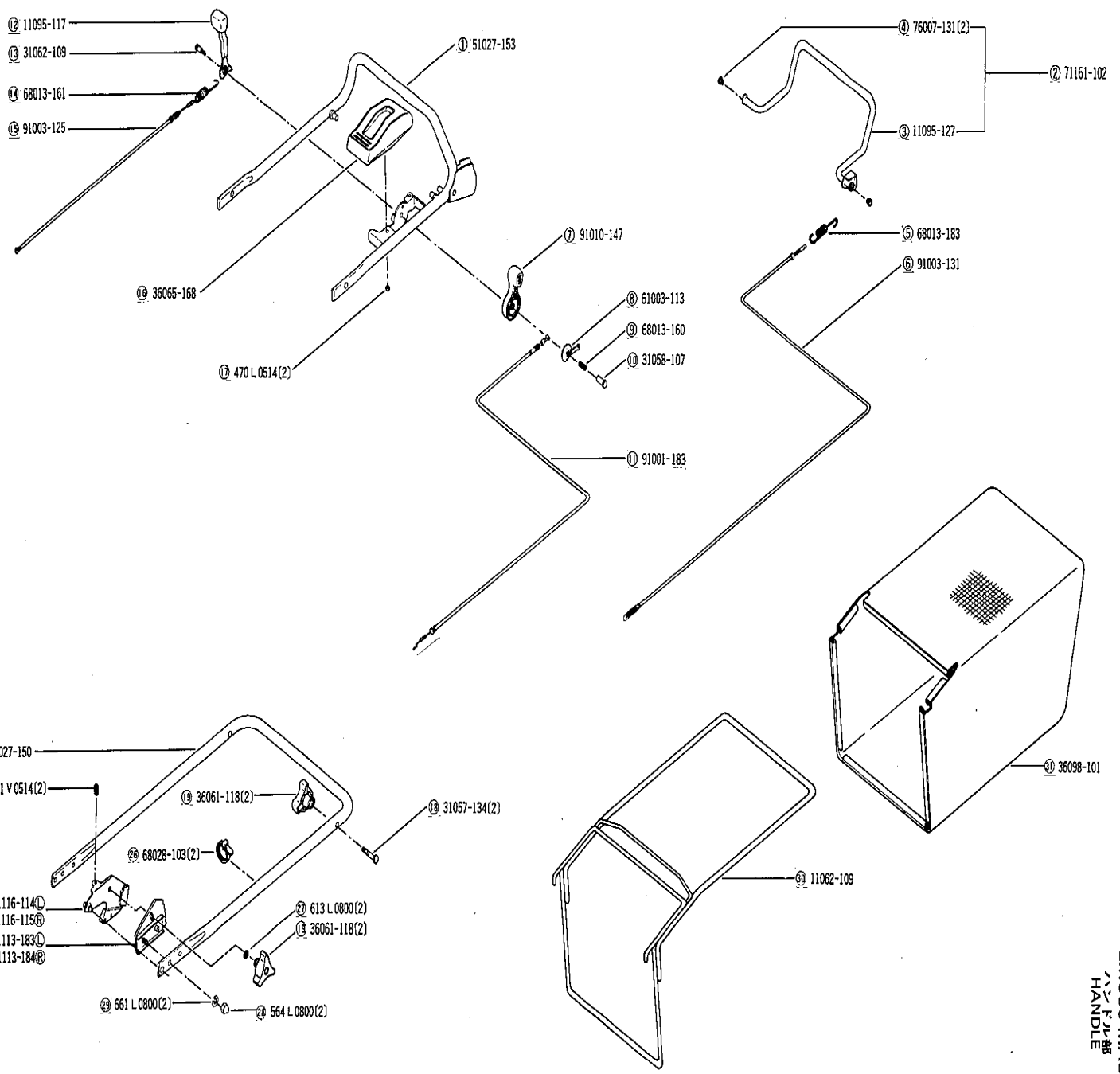
MODEL : LM530 MAX,MAX-N (HANDLE)

'89 Spec.

Dec. 4, 1989 E. Kanoh

1 / 2

REF. NO.	PARTS NO.	PARTS NAME	Q'TY	PRICE(¥)	Q'TY /100 SETS /YEAR	REMARKS
1	51027-148	HANDLE	1	8,740	3	
2	91084-102	JOINT LINK	1	1,130	5	
3	11095-118	LEVER	1	1,610	10	
4	412U1045	SOCKET SCREW M10x45	1	80	10	
5	31057-138	HEXAGON BOLT	1	490	10	
6	68036-101	WASHER	1	40	3	
7	661L0800	SPRING LOCK WASHER M8	1	10	3	
8	564L0800	HEXAGON CAP NUT M8	1	35	3	
9	68013-164	SPRING	1	410	5	
10	91003-126	CONTROL CABLE	1	1,270	15	
11	71161-102	LEVER ASS'Y	1	1,910	5	
12	11095-127	LEVER	(1)	1,840	3	
13	76007-131	BUSH	(2)	40	30	
14	68013-183	SPRING	1	410	5	
15	91003-131	CONTROL CABLE	1	1,040	5	
16	91010-147	THROTTLE LEVER	1	450	10	
17	61003-113	THRUST PLATE	1	120	5	
18	68013-160	SPRING	1	110	3	
19	31058-107	HEXAGON NUT	1	200	3	
20	91001-183	THROTTLE WIRE	1	1,060	10	
21	11095-117	LEVER	1	1,270	3	
22	31062-109	PRE-COAT LOCK BOLT	1	85	5	
23	68013-161	SPRING	1	320	3	
24	91003-125	CONTROL CABLE	1	920	5	
25	36065-168	COVER	1	1,040	3	
26	470L0514	(+)TAPPING SCREW M5x14	2	20	6	
27	31057-134	BOLT	2	130	6	
28	36061-118	KNOB	4	370	12	
29	51027-150	HANDLE	1	4,600	3	
30	11113-183	STAY	1	980	3	(L)



MODEL 89
 LMS30 MAS
 ハンドル
 HANDLE

PARTS LIST

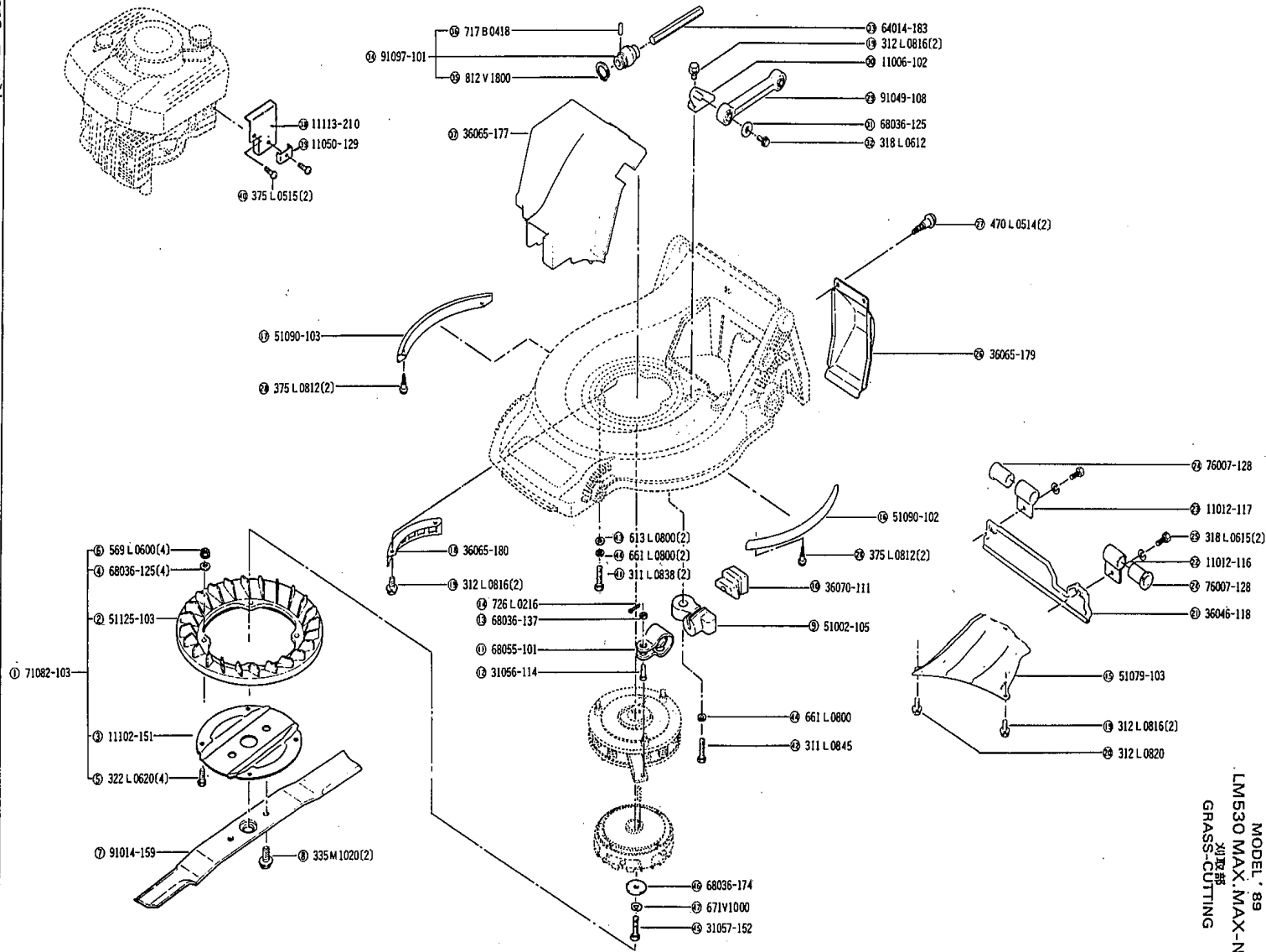
MODEL : LM530 MAS (HANDLE)

'89 Spec.

Dec. 4, 1989 E. Kanoh

1 / 2

REF. NO.	PARTS NO.	PARTS NAME	Q'TY	PRICE(¥)	Q'TY /100 SETS /YEAR	REMARKS
1	51027-153	HANDLE	1	7,820	3	
2	71161-102	LEVER ASS'Y	1	1,910	5	
3	11095-127	LEVER	1	1,840	3	
4	76007-131	BUSH	(2)	40	30	
5	68013-183	SPRING	1	410	5	
6	91003-131	CONTROL CABLE	1	1,040	5	
7	91010-147	THROTTLE LEVER	1	450	10	
8	61003-113	THRUST PLATE	1	120	5	
9	68013-160	SPRING	1	110	3	
10	31058-107	HEXAGON NUT	1	200	3	
11	91001-183	THROTTLE WIRE	1	1,060	10	
12	11095-117	LEVER	1	1,270	3	
13	31062-109	PRE-COAT LOCK BOLT	1	85	5	
14	68013-161	SPRING	1	320	3	
15	91003-125	CONTROL CABLE	1	920	5	
16	36065-168	COVER	1	1,040	3	
17	470L0514	(+)TAPPING SCREW M5x14	2	20	6	
18	31057-134	BOLT	2	130	6	
19	36061-118	KNOB	4	370	12	
20	51027-150	HANDLE	1	4,600	3	
21	11113-183	STAY	1	980	3	(L)
22	11113-184	STAY	1	980	3	(R)
23	51116-114	HANDLE BRACKET	1	1,380	3	(L)
24	51116-115	HANDLE BRACKET	1	1,380	3	(R)
25	711V0514	SPRING PIN ϕ 5x14	2	25	10	
26	68028-103	WIRE BAND	2	40	6	
27	613L0800	PLAIN WASHER M8	2	15	3	
28	564L0800	HEXAGON CAP NUT M8	2	35	6	
29	661L0800	SPRING LOCK WASHER M8	2	10	6	
30	11062-109	FRAME C.P.	1	5,060	3	



MODEL '89
 LMS30 MAX, MAX-N
 刈草機
 GRASS-CUTTING

PARTS LIST

MODEL : LM530 MAX,MAX-N (GRASS-CUTTING)

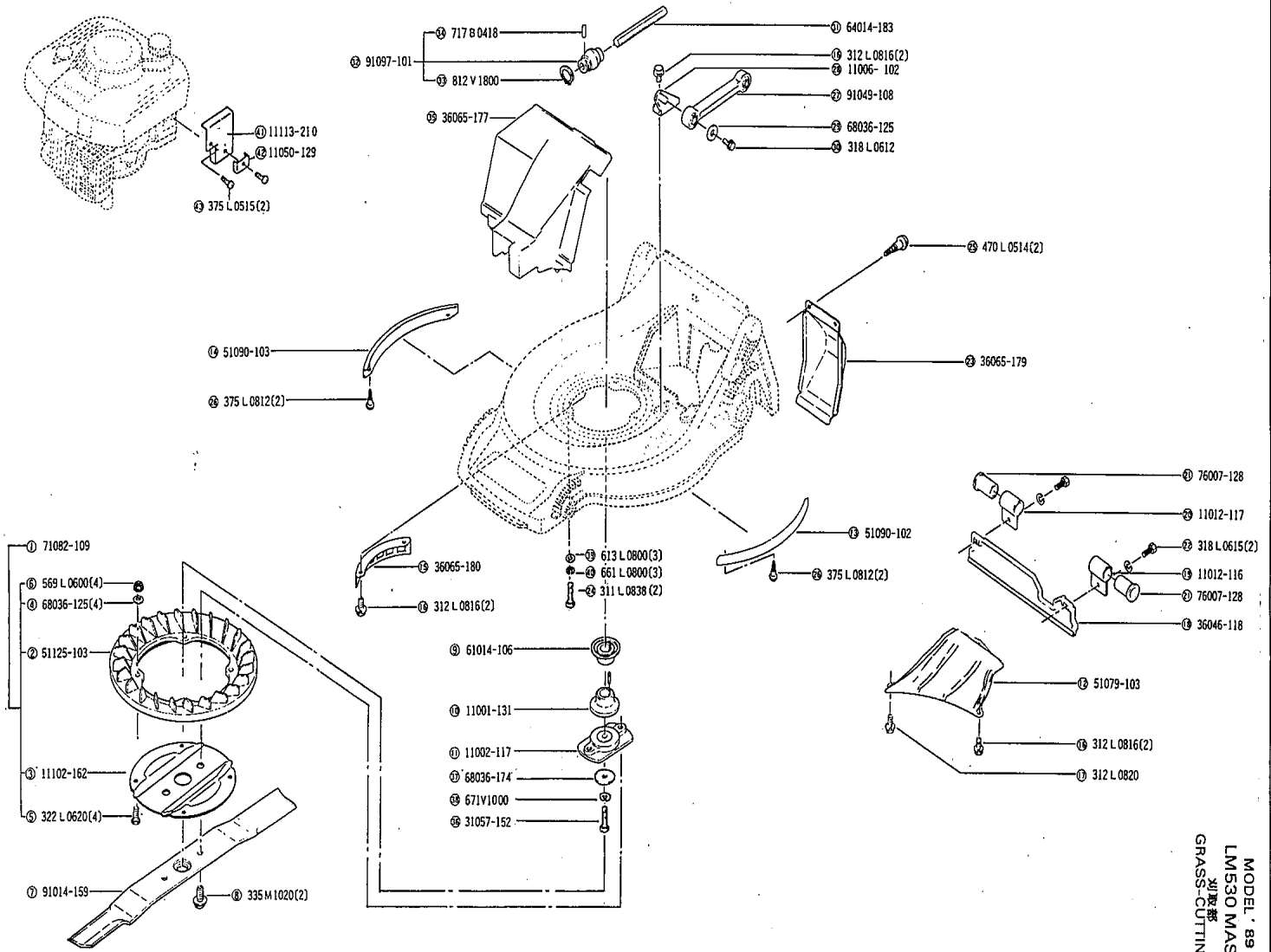
'89 Spec.

Dec. 4, 1989

E. Kanoh

1 / 2

REF. NO.	PARTS NO.	PARTS NAME	Q'TY	PRICE(¥)	Q'TY /100 SETS /YEAR	REMARKS
1	71082-103	FAN ASS'Y	1	2,590	3	
2	51125-103	FAN	(1)	1,270	5	
3	11102-151	HOLDER	(1)	1,040	5	
4	68036-125	WASHER	(4)	30	12	
5	322L0620	(+)HEXAGON BOLT M6x20	(4)	40	20	
6	569L0600	FLANGE NYLON NUT M6	(4)	40	12	
7	91014-159	BLADE	1	2,070	15	
8	335M1020	FLANGE BOLT M10x20	2	110	30	
9	51002-105	WIRE HOLDER	1	1,110	3	
10	36070-111	CAP	1	170	3	
11	68055-101	JOINT	1	130	10	
12	31056-114	GIB-HEADED PIN	1	90	10	
13	68036-137	WASHER	1	50	10	
14	726L0216	SPLIT PIN ϕ 2x16	1	25	10	
15	51079-103	COVER C.P.	1	2,250	5	
16	51090-102	PROTECTOR	1	570	3	(L)
17	51090-103	PROTECTOR	1	570	3	(R)
18	36065-180	COVER	1	430	3	
19	312L0816	HEXAGON BOLT(W/SW) M8x16	6	30	72	
20	312L0820	HEXAGON BOLT(W/SW) M8x20	1	35	12	
21	36046-118	SAFETY GUARD	1	920	3	
22	11012-116	HANGER BAND	1	230	3	(L)
23	11012-117	HANGER BAND	1	230	3	(R)
24	76007-128	BUSH	2	230	30	
25	318L0615	(+)HEXAGON BOLT(W/SW) M6x15	2	30	6	
26	36065-179	COVER	1	480	3	
27	470L0514	(+)TAPPING SCREW M5x14	2	20	6	
28	375L0812	(+)SCREW(W/SW) M8x12	4	35	48	
29	91049-108	CONNECTOR	1	890	3	
30	11006-102	STAY C.P.	1	380	3	



MODEL 89
 LM530 MAS
 刈草機
 GRASS-CUTTING

PARTS LIST

MODEL : LM530 MAS (GRASS-CUTTING)

'89 Spec.

Dec. 4, 1989 E. Kanoh

1 / 2

REF. NO.	PARTS NO.	PARTS NAME	Q'TY	PRICE(¥)	Q'TY /100 SETS /YEAR	REMARKS
1	71082-109	FAN ASS'Y	1	2,590	3	
2	51125-103	FAN	(1)	1,270	5	
3	11102-162	HOLDER	(1)	1,040	5	
4	68036-125	WASHER	(4)	30	12	
5	322L0620	(+)HEXAGON BOLT M6x20	(4)	40	20	
6	569L0600	FLANGE NYLON NUT M6	(4)	40	12	
7	91014-159	BLADE	1	2,070	15	
8	335M1020	FLANGE BOLT M10x20	2	110	30	
9	61014-106	SHAFT COLLAR	1	1,270	3	
10	11001-131	HOLDER A	1	1,270	3	
11	11002-117	HOLDER B	1	2,650	3	
12	51079-103	COVER C.P.	1	2,250	3	
13	51090-102	PROTECTOR	1	570	3	(L)
14	51090-103	PROTECTOR	1	570	3	(R)
15	36065-180	COVER	1	430	3	
16	312L0816	HEXAGON BOLT(W/SW) M8x16	6	30	72	
17	312L0820	HEXAGON BOLT(W/SW) M8x20	1	35	12	
18	36046-118	SAFETY GUARD	1	920	3	
19	11012-116	HANGER BAND	1	230	3	(L)
20	11012-117	HANGER BAND	1	230	3	(R)
21	76007-128	BUSH	2	230	30	
22	318L0615	(+)HEXAGON BOLT(W/SW) M6x15	2	30	6	
23	36065-179	COVER	1	480	3	
24	311L0838	HEXAGON BOLT M8x38	2	35	6	
25	470L0514	(+)TAPPING SCREW M5x14	2	20	6	
26	375L0812	(+)SCREW (W/SW) M8x12	4	35	48	
27	91049-108	CONNECTOR	1	890	3	
28	11006-102	STAY C.P.	1	380	3	
29	68036-125	WASHER	1	30	3	
30	318L0612	(+)HEXAGON BOLT(W/SW) M6x12	1	25	3	

